



HOSPITALITY



Nadel Inc., founded in 1973, has become widely recognized as a well respected architectural firm and has been consistently ranked amongst the top architectural firms in the United States. Our success is based not only on our reputation for high quality design and services, but also on the long-term relationships we have built with our clients. We take an interactive approach to the often complex design process by collaborating with clients to carry out their vision in a manner that is mindful of demanding budgets and schedules. Our depth of experience coupled with our passion for innovation and design, enable us to offer cost-effective solutions for a wide-range of project types. Nadel is committed to providing strategic planning and consulting services to help our clients respond to their business needs.

Since the firm's inception, Nadel has completed numerous built hotels worldwide. We have experience in various hotel types from luxury, resort and business to limited service. Our hotel brand experience includes:

- | | |
|----------------|---------------|
| ▪ Hyatt | ▪ Disney |
| ▪ Marriott | ▪ Hard Rock |
| ▪ Hilton | ▪ Aladdin |
| ▪ Amangiri | ▪ Ramada |
| ▪ Crowne Plaza | ▪ Holiday Inn |

Nadel has designed more than 60,000 multi-family residential units, over 30-million square feet of retail development, over 500 office buildings, numerous educational facilities, sports and entertainment complexes, and many other specialty

projects both in the United States and abroad. From master planning entire cities to revitalizing historical buildings, our attention to detail and ability to capture the true essence of a building, has led us to receive over 100 design excellence awards. Nadel offers a full-range of comprehensive services in the following practice areas.

- | | |
|-----------------------|-----------------------|
| ▪ Hospitality | ▪ Government |
| ▪ Residential | ▪ Entertainment and |
| ▪ Mixed-Use | Production Facilities |
| ▪ Retail | ▪ Sports Facilities |
| ▪ Office & Commercial | ▪ Transportation |
| ▪ Master Planning | ▪ Corporate |
| ▪ Education | ▪ Healthcare |

At Nadel, we promote environmental responsibility through our practice of sustainable design and our commitment to enhance communities for an environmentally sustainable future. We help our clients identify opportunities to achieve green design goals in order to save money and other valuable resources with more energy efficient buildings. Nadel has designed many sustainable facilities, utilizing a variety of accepted standards including LEED (Leadership in Energy and Environmental Design); BREEAM (BRE Environmental Assessment Method); and CHPS (Collaborative for High Performance Schools). We are always conscious of our impact on the planet and strive to create designs that honor our natural environment.

Nadel has offices in Los Angeles, Costa Mesa, San Diego and Las Vegas to fully service our clients with a network of multidisciplinary leaders. Our ability to connect across sectors all over the world give our clients a global advantage to better position themselves within the ever-changing and competitive marketplace.



KEMPINSKI HOTEL

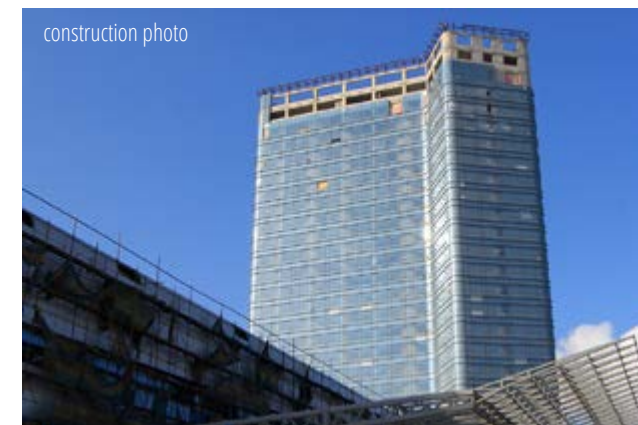
Dalian, China

PROGRAM: 440 room Kempinski Hotel, part of the Nadel-designed Dalian Sports Center. The hotel features a 1500 square meter ball room, a large fitness center, exercise pool area, and multiple restaurants.

The ground floor has a 4-story lobby, numerous shops, and extensive guest services.

SCOPE: Concept Design through Design Development

COMPLETION DATE 2015



construction photo



LE MERIDIEN HOTEL

Chicago, Illinois

CLIENT: Starwood Hotels & Resorts

PROGRAM:

Interior renovation of 17-story luxury hotel with 311 keys. Podium levels 1-4 house a ballroom, meeting facilities, bar lounge and restaurant while floors 5-17 include the hotel rooms. Located at Block 125, 520 North Michigan Ave. in Chicago. This project was a conversion of an office building to a 5 star hotel.

SCOPE: Interior Renovation

COMPLETION DATE: 2001





ABU DHABI HOTEL

Abu Dhabi, UAE

PROGRAM:

Initial design concept for a 35-story, 400 room hotel.

This full-service hotel is intended to serve business travelers in this bustling city.

SCOPE: Conceptual design





AL RAHA BEACH HOTEL

Abu Dhabi, UAE



PROGRAM:

Conceptual design for a new 45-story hotel with 391 guest rooms and an extensive array of residential, retail, office and commercial building opportunities.

SCOPE: Conceptual design

Completed by Patrick Winters at a previous firm



BAGLIONI HOTEL

Abu Dhabi, UAE

PROGRAM:

Conceptual design for a privately owned Italianate modern hotel.

Design features include a cantilevered rooftop pool with spa and the interior lobby columns are echoed by the alignment of the trees in the formal palm court garden.

SCOPE: Conceptual design





THE SUPER CENTER

Abuja, Nigeria

PROGRAM:

2.5 million square foot mixed use complex which includes a 5-star hotel, retail shopping mall, service apartment residences and parking.

SCOPE: Conceptual design



CONCEPT IMAGE: TRADITIONAL NIGERIAN FABRIC



W HOTEL

Nanjing, China

PROGRAM:

42 story tower with 400 room hotel, 100 service apartments, conference center, ballroom, restaurant, fitness center and a 4,000 square meter retail podium

SCOPE: Conceptual design



W HOTEL

Houston, Texas

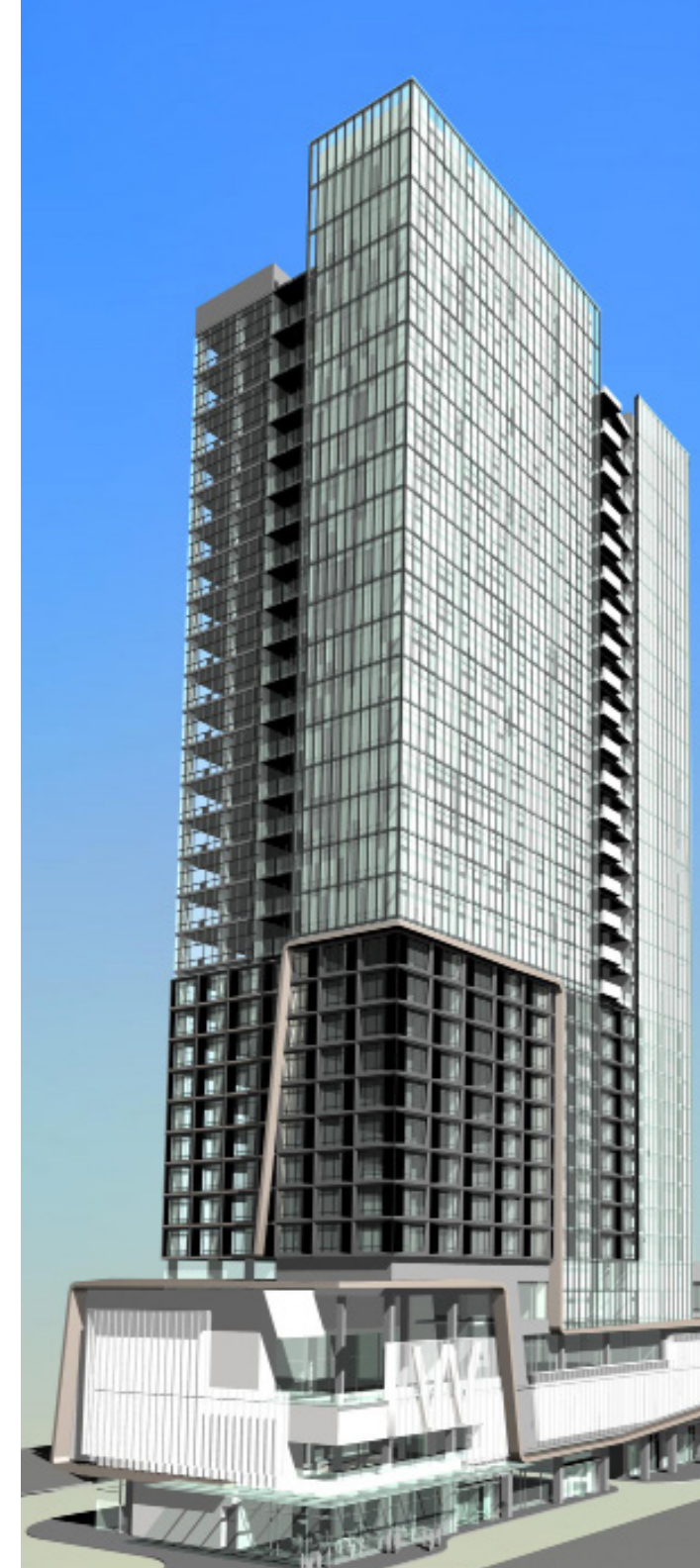
CLIENT: Oliver Mc Millen

PROGRAM:

37 story tower with retail, W hotel and luxury condos in the River Oaks district in Houston; a growing high-end neighborhood near the Galleria business area. The strategic location of the tower on the site as a signaletic entry element drove the design to emphasize "floating" geometrical elements that create a dynamic hierarchy which play with the interlocking aspects of the program.

SCOPE: Conceptual design

Project Experience of Luc Peltier at a Previous Firm





WESTIN HOTEL

Shuzhou, China

PROGRAM:

Conceptual design for a five-star, 325-room lake front hotel featuring a cantilevered executive lounge. The project includes retail space, a spa, six upscale restaurants and a conference center with ballroom and exhibition space.

SCOPE: Conceptual design



CROWNE PLAZA HOTEL

Burlingame, California

CLIENT: Winship Properties, Oak Tree Capital

PROGRAM:

Renovation of Interior and Exterior of 10 story, 320 room hotel.
The hotel also includes lobby, conference facilities and 4-star restaurant.

NADEL SCOPE: Complete Renovation of Interior and Exterior

COMPLETION DATE: 2001





ZHONGMAO HAIYUE HOTEL

Shijiazhuang, China

PROGRAM:

29-story, 700,000 square feet, ground up, 5-star hotel with 500 rooms, five restaurants and the 3-story base features conference and entertainment facilities.

NADEL SCOPE: A/E Services

COMPLETION DATE: 2005



MARRIOTT SPRINGHILL SUITES

Calabasas, California

CLIENT: Rondell Oasis, LLC

PROGRAM:

4 story, 73,000 square foot all suites hotel includes 127 keys, pool, spa and gym. 9 ADA accessible suites. Each suite includes a living/office space. Surface parking.

SCOPE: Entitlements, Conceptual Design and Planning

STATUS: Entitlement Phase



LOEWS ROYAL PACIFIC HOTEL AT UNIVERSAL STUDIOS ORLANDO

Orlando, Florida



PROGRAM:

1,800 room first class hotel with 150,000 square foot meeting space. The hotel features one of the largest lagoon style pools in the Greater Orlando area. The property also includes a fitness center, business center and a variety of restaurants and bars.

COMPLETION DATE: 2001

Project Experience of Dana Aiken



ST. REGIS MONARCH BEACH

Dana Point, California



PROGRAM:

Schematic Design for a 400 room luxury resort hotel and 25,000 square foot meeting space.

SCOPE: Schematic Design

COMPLETION DATE: 2001

Project Experience of Dana Aiken



HYATT REGENCY- PLAZA ALICANTE

Garden Grove, California

CLIENT: Hyatt Hotel Co.

PROGRAM:

Renovation of existing hotel, conversion of adjacent 10-story office tower into 272-suite hotel and redesign of 16-story garden atrium and reception area and the addition of an 18,000 square foot grand ballroom.

NADEL SCOPE: Conference Facilities Addition & Interiors

COMPLETION DATE: 2004

CONSTRUCTION COST: \$35,000,000



RITZ-CARLTON HUNTINGTON HOTEL

Pasadena, California

PROGRAM:

Interior renovation of historic Clara Vista Cottage into a luxury executive retreat. The Clara Vista Cottage is a completely self-contained, state-of-the-art facility with four master bedroom suites, a conference room, library, living room, and catering kitchen.

NADEL SCOPE: Interior renovation

COMPLETION DATE: 2000





ALADDIN HOTEL AND CASINO

Las Vegas, Nevada

PROGRAM:

39-story themed hotel with 2,600 rooms, 1.5 million square foot themed retail bazaar, 100,000 square foot casino, 21 restaurants, and spa. The property also includes state-of-the art safety and surveillance technology.

NADEL SCOPE: Architect of Record

COMPLETION DATE: 2001





SUNSET MARQUIS HOTEL & VILLAS

Los Angeles, California

OWNER/CLIENT: Raleigh Enterprises

PROGRAM:

75,000 square foot addition of 42 luxury suites in Mediterranean-style villas. Includes meetings rooms, fitness center and subterranean parking.

NADEL SCOPE:

Renovation and Expansion - A/E Services

COMPLETION DATE:

Phase I: 2006

Phase II: 2008

CONSTRUCTION COST: \$13,000,000





ROSEWOOD HOTEL

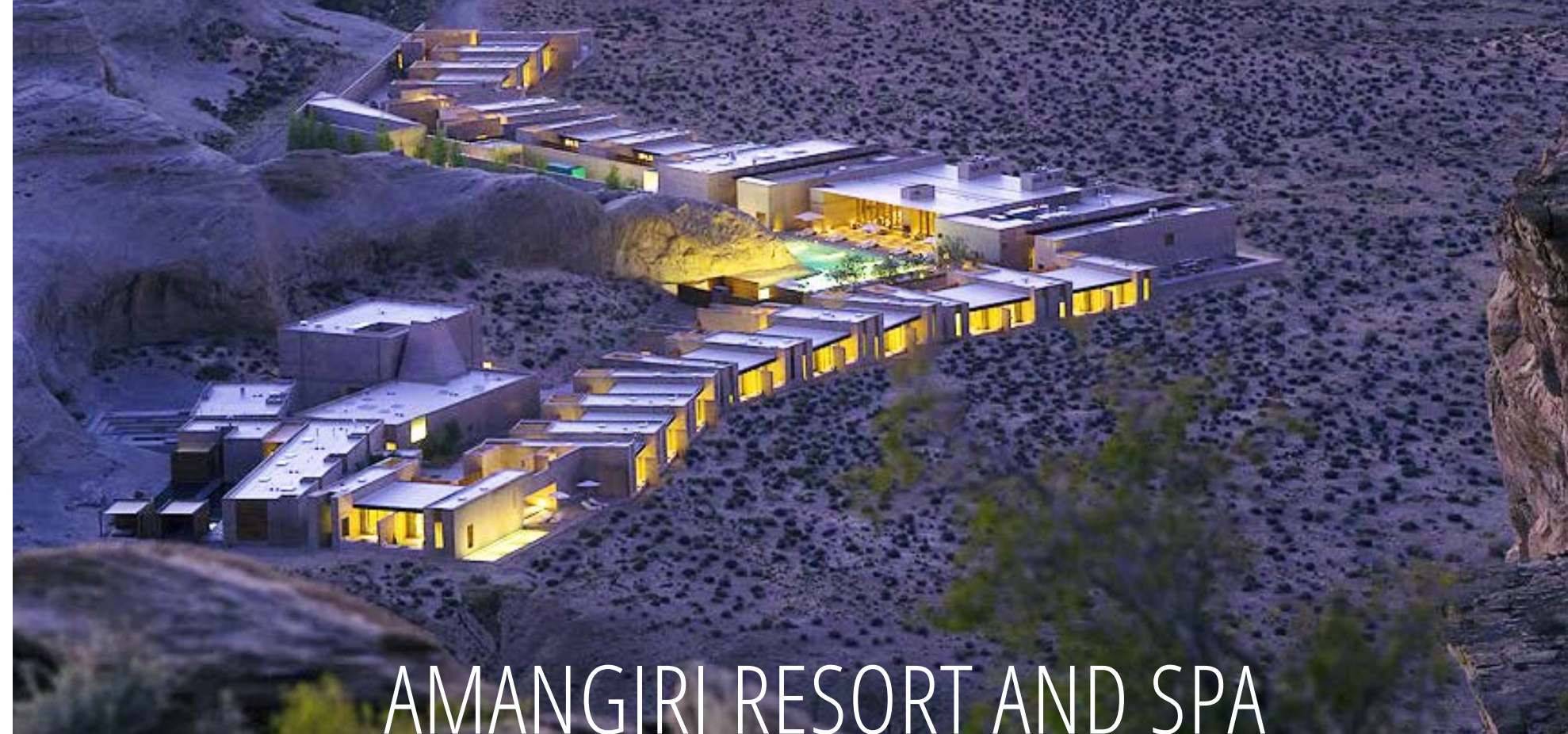
Palm Desert, California

PROGRAM:

Located next to El Paseo, the main shopping street in Palm Desert, this 328,000 square foot, five-star hotel contains 59 luxury condominium units and 90 rooms and suites. Amenities include rooftop pools, restaurants, and spas.

SCOPE: Entitlements, Conceptual Design and Planning





AMANGIRI RESORT AND SPA

Canyon Springs, Utah

CLIENT: Canyon Land Development, LLC

PROGRAM:
34 guestroom luxury resort with a 12,000 square foot spa, located on 600 Acres north of Lake Powell.

SCOPE: Architect of Record

COMPLETION DATE: 2009

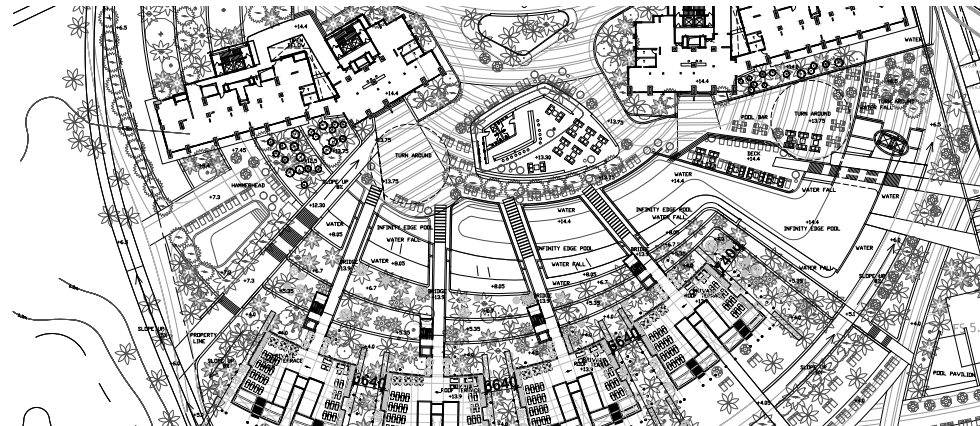
Project Experience of Dana Aiken





ALOHA RESORT AT CLEARWATER BAY

Hainan Island, China



PROGRAM:

A new 440,000 square meter resort development for Clear Water Bay near Sanya, Hainan Island China. The project will feature over 3,000 units of hotel guestrooms, apartments and villas.

The master plan is focused on maximizing views to the ocean through higher density development near the beach while an inner lake district creates a water and green space amenity for the single-family villas. A vibrant retail district will connect the hotels, apartments and villas together along "Ocean Boulevard", a street inspired by Waikiki Beach in Honolulu, Hawaii.

Phase I currently under construction

Project Experience of Luc Peltier at a Previous Firm

NADEL



Sanya Bay, Hainan Island, China

CLIENT: Sanya Lihe Investment & Development Co., Limited

PROGRAM:

The project will provide a unique mixture of open-air retail shops and restaurants directly under a 5-star hotel and residential property. The 500+ guestrooms and apartments will have easy access to the beach through a podium level pool area. The retail promenade will be connected directly into the towers above and out to the city streets to attract visitors and shoppers from adjacent hotel properties. The site planning is set to integrate two existing adjacent hotel buildings to create a new larger resort.

Project Experience of Luc Peltier at a Previous Firm





FUTIAN HOTEL AT FUTIAN SPORTS AND ENTERTAINMENT COMPLEX

Futian District, Shenzhen, China

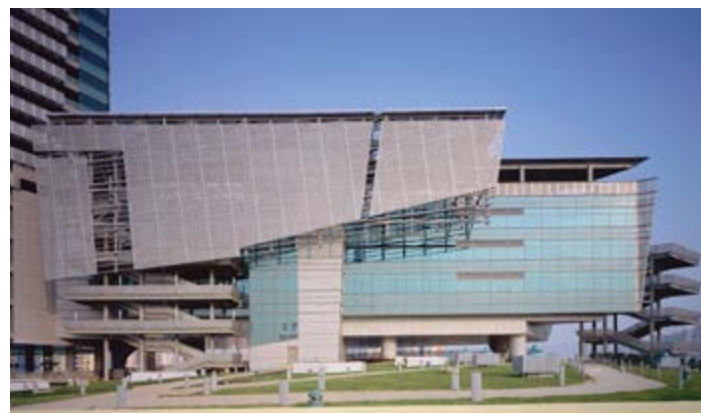
OWNER/CLIENT: City of Shenzhen

PROGRAM:

Regional sports and entertainment facilities including: 30-story 400 room hotel; 68,500 square foot multi-purpose gymnasium / auditorium with 3,500 spectator seats; 45,200 square foot natatorium with a 50-meter pool, specialty pools, and 500 spectator seats; 13,778 square foot fitness center and clubhouse; indoor archery ranges, badminton courts, and bowling lanes; rooftop tennis courts; FIFA-compliant turf football pitch with 5,000 covered spectator seats.

NADEL SCOPE: Architectural Design through Design Development Phase

COMPLETION DATE: Design Completed in 2000, Construction completed 2009





310.826.2100

LOS ANGELES

COSTA MESA

SAN DIEGO

LAS VEGAS